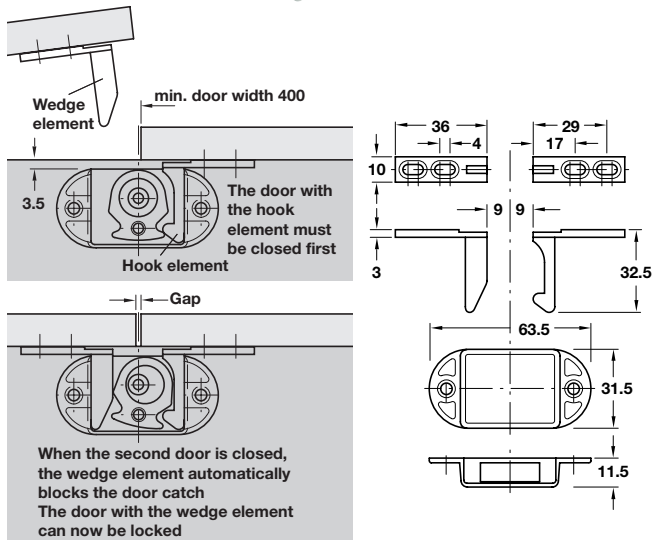
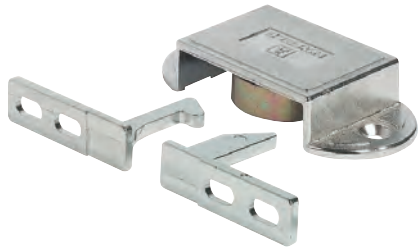


DOOR CATCH, SPRING LOADED PLUNGER, DRAWER LATCH

Automatic door catch

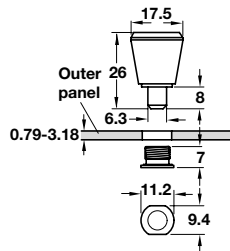
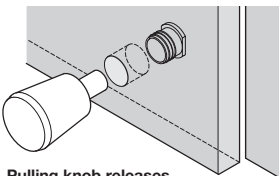


- > Locks double panel doors without additional stop strips or furniture bolts
- > Door catch mounted inside the cabinet, hook and wedge element mounted to inside of either right or left door
- > Use automatic door catch in conjunction with concealed cup hinges
- > Zinc alloy
- > Order qty: 1 pc



| | |
|---------------|------------|
| Finish | Cat. No. |
| Nickel-plated | 245.58.754 |

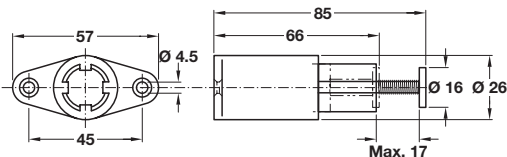
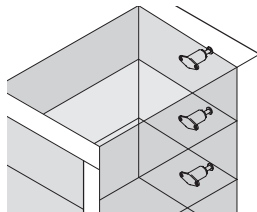
Spring loaded plunger



- > Holds against lateral motion
- > Provides quick release of sliding parts
- > Without hold-open feature
- > Aluminium and steel
- > Order qty: 1 pc

| | |
|-----------------------|------------|
| | Cat. No. |
| Spring loaded plunger | 229.12.900 |

Flexa-Touch drawer latch



- > Sprung, requires no additional handles or knobs for the drawer front
- > A simple touch of the finger releases the spring and opens the drawer automatically
- > The knob has 20 mm adjustment for perfect alignment of the drawers
- > Plastic
- > Order qty: 1 pc



| | |
|--------|------------|
| Finish | Cat. No. |
| Beige | 245.52.403 |