

SCREW FIXING SHELF SUPPORTS FOR GLASS

ixconnect

Two-part shelf support with tightening element that holds the shelf in position and prevents tipping.



> Plug in version also available, shown on page 28

After the shelf support has been tightened in the side panel the glass shelf is put into place...

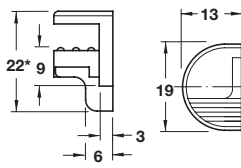
...then the tightening element is inserted.

Pressing down on the tightening element fixes the glass shelf in position. The shelf support prevents it from tipping as well as being unintentionally lifted and removed.

Glass shelf support, screw fixing



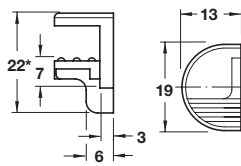
282.13.701



*For 6 mm glass thickness



282.13.702



*For 8 mm glass thickness

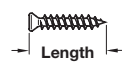
- > For Ø 3/5 mm hole
- > For 6/8/10 mm or 8/10/12 mm glass thickness
- > Zinc alloy with transparent plastic glass support
- > Order qty: Multiples of 10 pcs



> Order fastening materials separately, shown below

For glass thickness	6/8/10 mm	8/10/12 mm
Nickel-plated	282.13.701	282.13.702

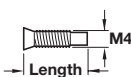
Mounting screw



- > For Ø 3 mm hole
- > Nickel-plated steel
- > Order qty: Multiples of 100 pcs

Length	Cat. No.
15 mm	282.13.781
18 mm	282.13.782

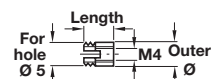
M4 mounting screw



- > For use with sleeve Cat. No. 051.45.004
- > Nickel-plated steel
- > Order qty: Multiples of 100 pcs

Length	Cat. No.
15 mm	282.13.791

Sleeve, M4 internal thread



- > For Ø 5 mm hole
- > Bright brass
- > Order qty: Multiples of 100 pcs

Length	Cat. No.
8 mm	051.45.004