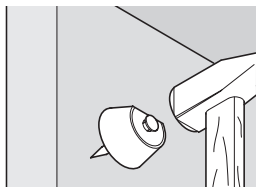
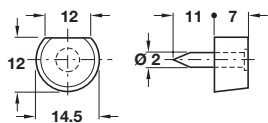


PINNED AND SCREW FIXING SHELF SUPPORTS

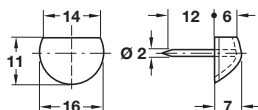
Shelf support, knock in



- > Flattened
- > Load carrying capacity 60 kg*
- > Plastic with steel pin
- > Order qty: Multiples of 100 pcs

Finish	Pin	Cat. No.
Brown	Yellow chromated	281.23.104
White	Nickel-plated	281.23.702

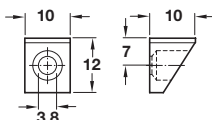
Shelf supports, knock in



- > With open top
- > Load carrying capacity 60 kg*
- > Steel
- > Order qty: Multiples of 100 pcs

Finish	Cat. No.
Nickel-plated	281.10.705

Shelf support, screw fixing

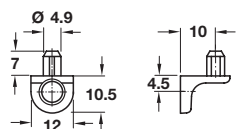


- > Also suitable for glass shelves
- > With cap
- > Load carrying capacity 60 kg*
- > Zinc alloy
- > Order qty: Multiples of 50 pcs



Finish	Cat. No.
Nickel-plated	282.18.706

Shelf supports, screw fixing



- > With shelf fixing lug for Ø 5 mm hole
- > Screw fixing in to Ø 3 mm or Ø 5 mm series-drilled holes, or Ø 5 mm Hospa screw fixing
- > Load capacity 80 kg*
- > Zinc alloy
- > Order qty: Multiples of 100 pcs



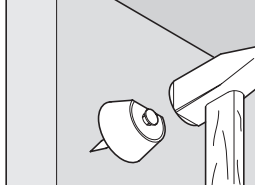
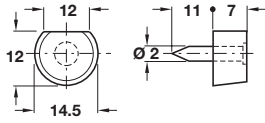
Finish	Cat. No.
Nickel-plated	282.24.704



- > *Load carrying capacity applies to 4 shelf supports bearing an evenly distributed load
- > Testing was carried out according to DIN EN 1727 "Mechanical safety requirements for shelf supports"

PINNED AND SCREW FIXING SHELF SUPPORTS

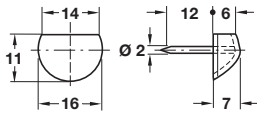
Shelf support, knock in



- > Flattened
- > Load carrying capacity 60 kg*
- > Plastic with steel pin
- > Order qty: Multiples of 100 pcs

Finish	Pin	Cat. No.
Brown	Yellow chromated	281.23.104
White	Nickel-plated	281.23.702

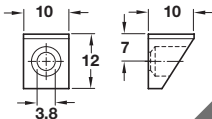
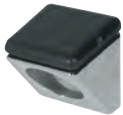
Shelf supports, knock in



- > With open top
- > Load carrying capacity 60 kg*
- > Steel
- > Order qty: Multiples of 100 pcs

Finish	Cat. No.
Nickel-plated	281.10.705

Shelf support, screw fixing

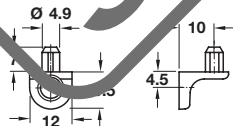


- > Also suitable for glass shelves
- > With cap
- > Load carrying capacity 60 kg*
- > Zinc alloy
- > Order qty: Multiples of 50 pcs



Finish	Cat. No.
Nickel-plated	282.18.706

Shelf supports, screw fixing



- > With shelf fixing lug for Ø 5 mm hole
- > Screw fixing in to Ø 3 mm or Ø 5 mm series-drilled holes, or Ø 5 mm Hospa screw fixing
- > Load capacity 80 kg*
- > Zinc alloy
- > Order qty: Multiples of 100 pcs



Finish	Cat. No.
Nickel-plated	282.24.704



- > *Load carrying capacity applies to 4 shelf supports bearing an evenly distributed load
- > Testing was carried out according to DIN EN 1727 "Mechanical safety requirements for shelf supports"