

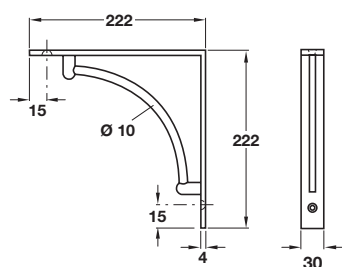
BRACKETS

FIXED BRACKETS

Wall fixing, suitable for wooden shelves.



Fixed bracket, for shelves



- > Screw fixing
- > Load carrying capacity 40 kg* per pair
- > Steel
- > Order qty: 1 pc (1 pc = 1 bracket)



Finish
Polished chrome

Cat. No.
287.73.220



- > *The load carrying capacity value shown is dependent on certain conditions:
Appropriate fixings are used to fix the brackets to the wall. Wall mounting must accommodate the load capacity
The load is distributed evenly
The long arm being mounted on the wall (where applicable)
Maximum distance between brackets 800 mm
- > The properties and materials of the shelves and walls as well as the type of mounting material used must be taken into account