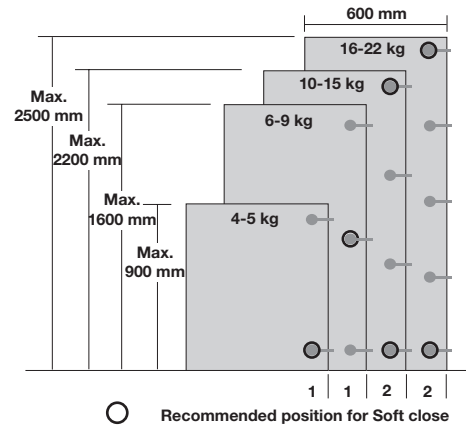
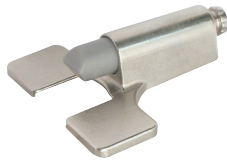
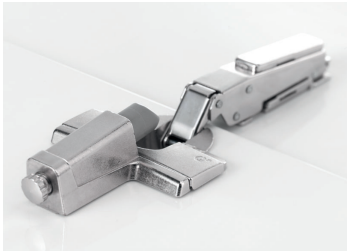


ACCESSORIES AND INSTALLATION TOOLS FOR STANDARD HINGES



Standard hinges are shown on pages **370-387**

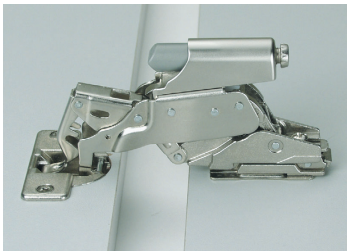
Soft close fitting, for screw fixing cup



- > For use with 95°/100°/110°/125°/45°/30°/post/-24°/-14° sprung concealed hinges with screw fixing cup
- > The quantity and position of soft close will depend on door height and weight, see chart above
- > No fixing materials required, clips onto hinge cup
- > Zinc alloy
- > Order qty: 1 pc

Finish	Cat. No.
Nickel-plated	322.67.190

Soft close fitting, for screw fixing cup



- > For use with sprung 170° concealed hinges with screw or dowel fixing cup - shown on page **376-377**
- > The quantity and position of soft close will depend on door height and weight, see chart above
- > No fixing materials required, clips onto hinge arm
- > Zinc alloy
- > Order qty: 1 pc

Finish	Cat. No.
Nickel-plated	322.67.170

Opening angle reduction clip for 170° hinge



- > Reduces the opening angle to 120°
- > Prevents doors from coliding with the cabinet side in inset or mitred corner applications
- > Black plastic
- > Order qty: 1 pc

Cat. No.
For use with 170° hinge 322.66.320

Opening angle reduction clip for 110° hinge



- > Reduces the opening angle to 85°
- > Prevents doors from coliding with fronts or walls in corner applications
- > For use with hinges shown on pages **374-375**
- > Black plastic
- > Order qty: 1 pc

Cat. No.
For use with 110° hinge 322.66.310

DRAWER SYSTEMS, STAYS AND HINGES 2015, © Häfele U.K. Ltd 2015. Dimensional data not binding. We reserve the right to alter specifications without notice.