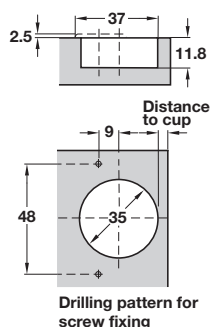


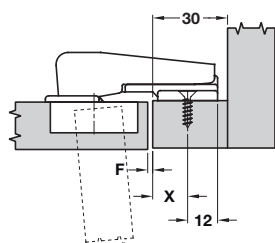
# STANDARD BLIND CORNER HINGE



- > Opening angle 95°
- > Sprung
- > Ø 35 mm cup
- > Screw fixing cup
- > Slide on arm
- > Soft close compatible
- > Nickel-plated pressed steel cup, nickel-plated zinc alloy arm
- > Order fixing screws separately
- > Order qty: Multiples of 10 pcs

Mounting plate position (X)	Cup distance			
	3.0	4.0	5.0	6.0
10	7	6	5	4
11	6	5	4	3
12	5	4	3	2
13	4	3	2	1
14	3	2	1	0
15	2	1	0	
16	1	0		
17	0			
Door reveal F				

## Blind corner hinge



Fixing  
Screw fixing

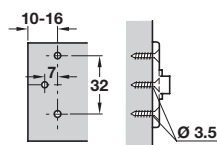


Slide on  
323.27.503

## YOU ALSO NEED:



## Cruciform mounting plate



- > For use with the above blind corner hinge only
- > Hospa screw fixing
- > One part plate with external height adjustment
- > Nickel-plated zinc alloy
- > Order fixing screws separately
- > Order qty: 1 pc



Height  
0 mm

Cat. No.  
323.82.719