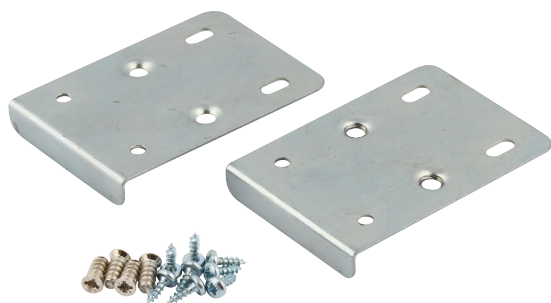


Hinge repair plates

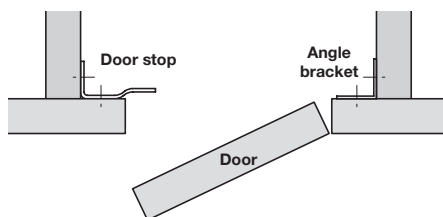
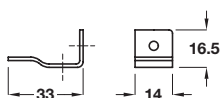
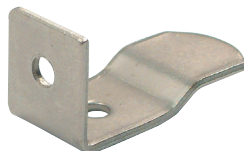


- > Set consists of:
 - 2x Concealed hinge mounting repair plates, 75 x 55 x 10 x 1mm thick
 - 8x Hospa screws, pan head, Ø 4.0 mm, zinc-plated
 - 4x Varianta screws, raised head, for Ø 5 mm hole, nickel-plated
- > For use with mounting plates with pre-mounted euro screw
- > Order qty: 1 set



Finish	Cat. No.
Bright zinc-plated	260.22.955
Cream white RAL 9001	260.22.755

Metal door stop



- > Screw fixing
- > Excellent for use on inset kitchen cabinets
- > Use door buffer 356.22.410 to protect door, shown below
- > Order qty: Multiples of 100 pcs

Finish	Cat. No.
Nickel	233.07.600

Door buffer in pairs

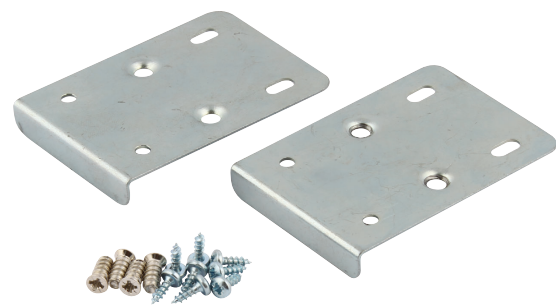


- > Ø 7 x 1.5 mm
- > Plastic
- > Order qty: Multiples of 100 pcs (1 pc = 2 buffers)

Finish	Cat. No.
Transparent	356.22.410



Hinge repair plates

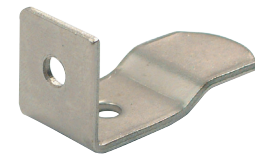


- > Set consists of:
 - 2x Concealed hinge mounting repair plates, 75 x 55 x 10 x 1mm thick
 - 8x Hospa screws, pan head, Ø 4.0 mm, zinc-plated
 - 4x Varianta screws, raised head, for Ø 4 mm hole, nickel-plated
- > For use with mounting plates with pre-mounted euro screw
- > Order qty: 1 set

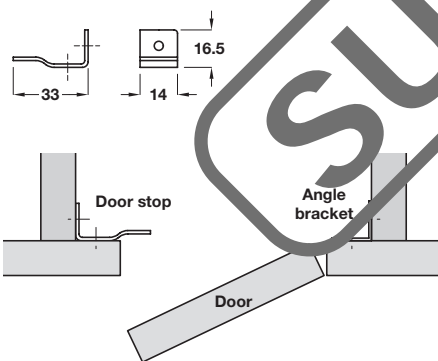


Finish	Cat. No.
Bright zinc-plated	260.22.955
Cream white, AL 9001	260.22.755

Metal door stop



- > Screw fixing
- > Excellent for use on inset kitchen cabinets
- > Use door buffer 356.22.410 to protect door, shown below
- > Order qty: Multiples of 100 pcs



Finish	Cat. No.
Nickel	233.07.600

Door buffer in pairs



- > Ø 7 x 1.5 mm
- > Plastic
- > Order qty: Multiples of 100 pcs (1 pc = 2 buffers)

Finish	Cat. No.
Transparent	356.22.410