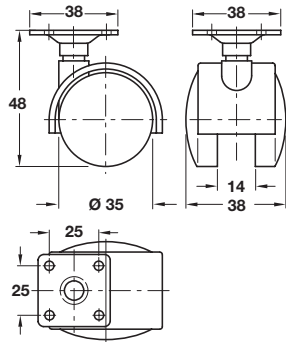


CASTORS WITH Ø 35 MM WHEELS

Twin wheel swivel castor, hooded, Ø 35 mm wheels, plate fixing

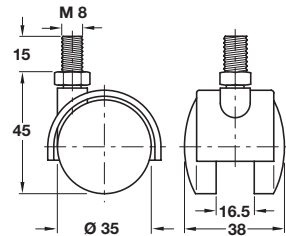


- > With 38 x 38 mm mounting plate
- > Matt black plastic
- > Order qty: 1 pc



Wheel Ø	Load capacity	Without brake
Ø 35 mm	25 kg	660.07.301

Twin wheel swivel castor, hooded, Ø 35 mm wheels, M8 thread fixing



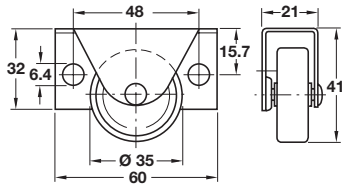
- > With M8 x 15 mm threaded bolt
- > Matt black plastic
- > Order qty: 1 pc



> M8 T-nut for mounting thread fixing castors under wooden bases are shown on page 111

Wheel Ø	Load capacity	Without brake
Ø 35 mm	25 kg	660.07.304

Fixed castor, for underbed boxes, Ø 35 mm wheel, side plate fixing

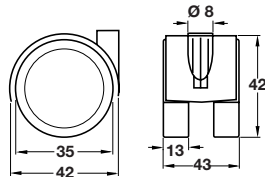


- > Fixed castor; without swivel
- > Low installation height and easy to move on carpeted floors
- > With side fixing mounting plate
- > Galvanized steel housing, white plastic wheel
- > Order qty: Multiples of 10 pcs



Wheel Ø	Load capacity	Without brake
Ø 35 mm	40 kg	660.98.904

Twin wheel swivel castor, Ø 35 mm wheel, with Ø 8 mm pin hole



- > For use with pin and mounting plate
- > Black plastic
- > Order qty: 1 pc



> Ø 8 mm pin and mounting plate is shown on page 110

Wheel Ø	Load capacity	Without brake	With brake
Ø 35 mm	60 kg	660.46.300	660.47.300