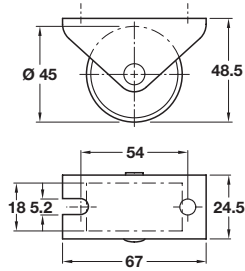


CASTORS WITH Ø 45 OR 50 MM WHEELS

Fixed castor, special use, Ø 45 mm wheel, plate fixing



- > Fixed castor; without swivel
- > If mounted wheel uppermost, can be used as conveyor system
- > Chromatized galvanized steel housing, plastic wheel
- > Order qty: 1 pc

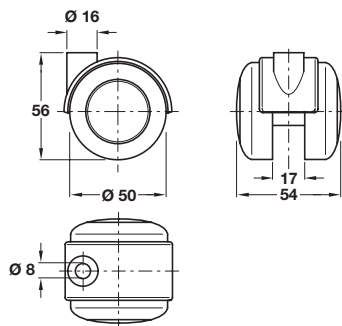


Wheel Ø	Load capacity	Without brake
Ø 45 mm	35 kg	661.25.906

Twin wheel swivel castor, hooded, Ø 50 mm wheels, Ø 8 mm pin hole



Photo shows version without brake



- > For use with Ø 8 mm pin
- > Plain wheel bearing
- > Aluminium coloured plastic housing, mid grey non-marking rubber wheel and mid grey plastic brake
- > Order qty: 1 pc



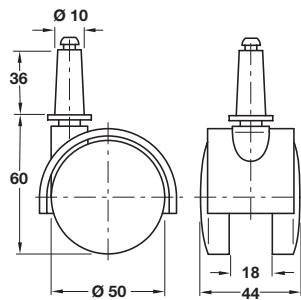
> Ø 8 mm pin and mounting plates are shown on pages 110-111

Wheel Ø	Load capacity	Without brake	With brake
Ø 50 mm	40 kg	660.91.903	660.90.903

Twin wheel swivel castor, hooded, Ø 50 mm wheels, press fit



Photo shows version without brake



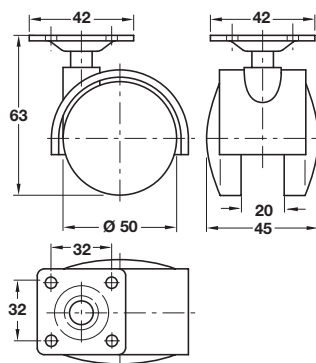
- > With plastic press fit Ø 10 x 30 mm socket with no holes for fixing pins
- > Matt black plastic
- > Order qty: 1 pc

Wheel Ø	Load capacity	Without brake	With brake
Ø 50 mm	40 kg	660.07.320	660.08.320

Twin wheel swivel castor, hooded, Ø 50 mm wheels, plate fixing



Photo shows version with brake



- > With 42 x 42 mm mounting plate
- > Matt black plastic
- > Order qty: 1 pc



Wheel Ø	Load capacity	Without brake	With brake
Ø 50 mm	40 kg	660.07.321	660.08.321